

 Agriculture and Agri-Food Canada Agriculture et Agroalimentaire Canada




Natural Filtration to Treat Runoff from Confined Cattle Sites

Serena McIver
Agri-Environment Services Branch
Agriculture and Agri-Food Canada

22 June 2010

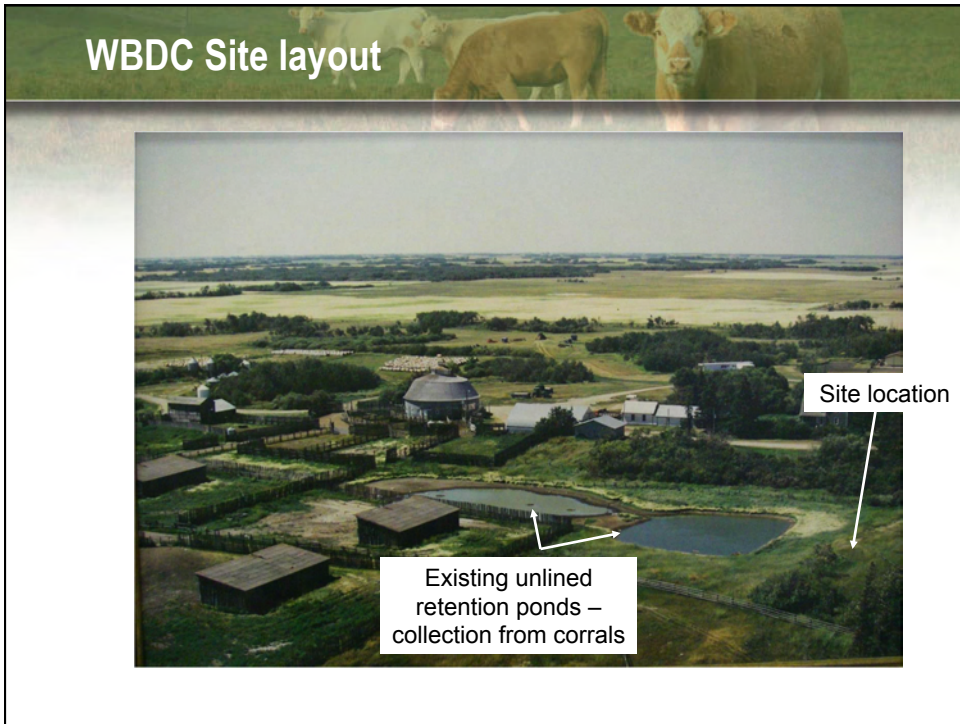


Traditional Wintering Sites



- Close to yard (shelter, water, power)
- Near water bodies
- Limited space, expensive to move





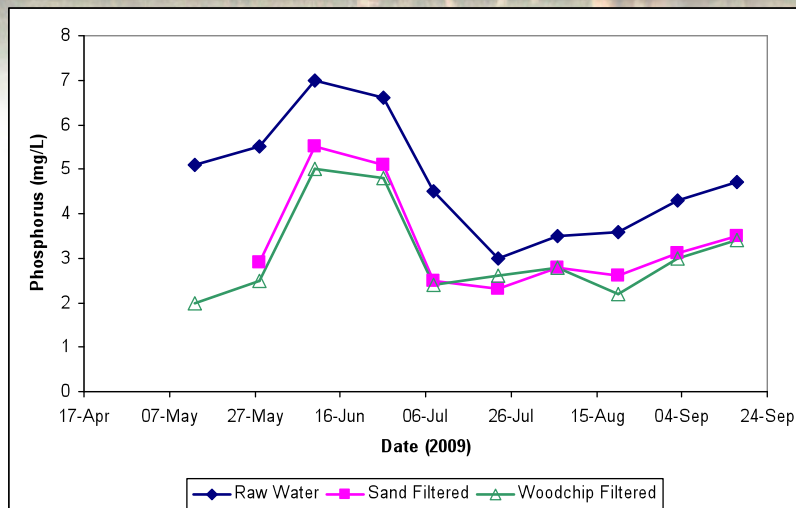




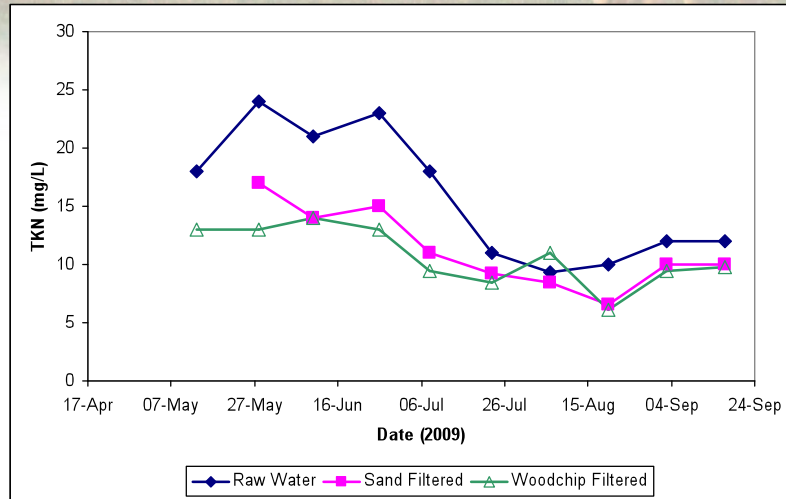
Median Raw Water Chemistry

	Lanigan	Dawson Creek	Edmonton
Nitrate+ Nitrite (mg/L N)	0.1	0.1	0.5
Ammonia (mg/L N)	0.7	11.0	61
Phosphorus (mg/L)	5	5	10
TN (mg/L)	15	25	94
BOD (mg/L)	14	30	123
TSS (mg/L)	20	32	17
<i>E. coli</i> (MPN/100mL)	33	750	575
Conductivity (uS)	7 500	1 822	2 612

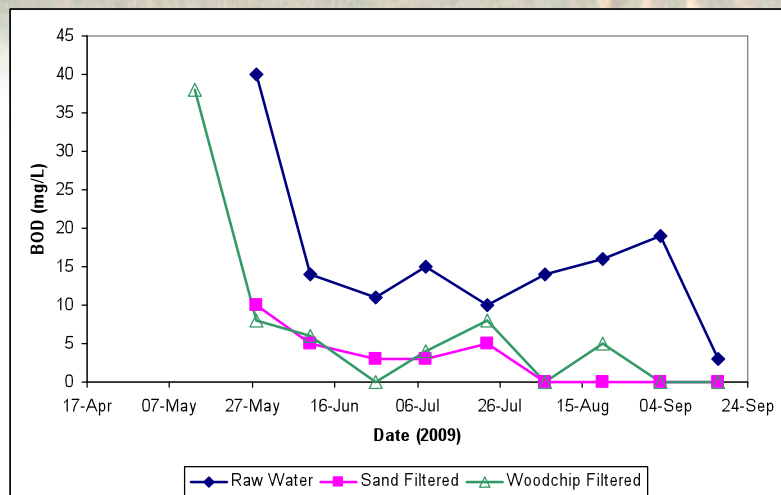
Total Phosphorus Concentrations 2009

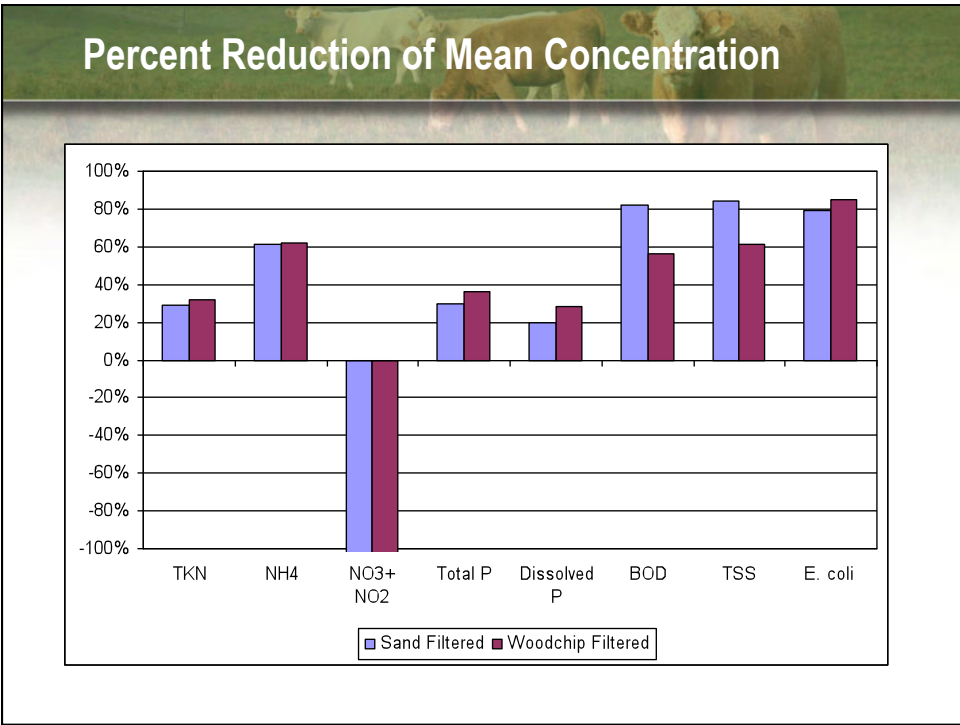
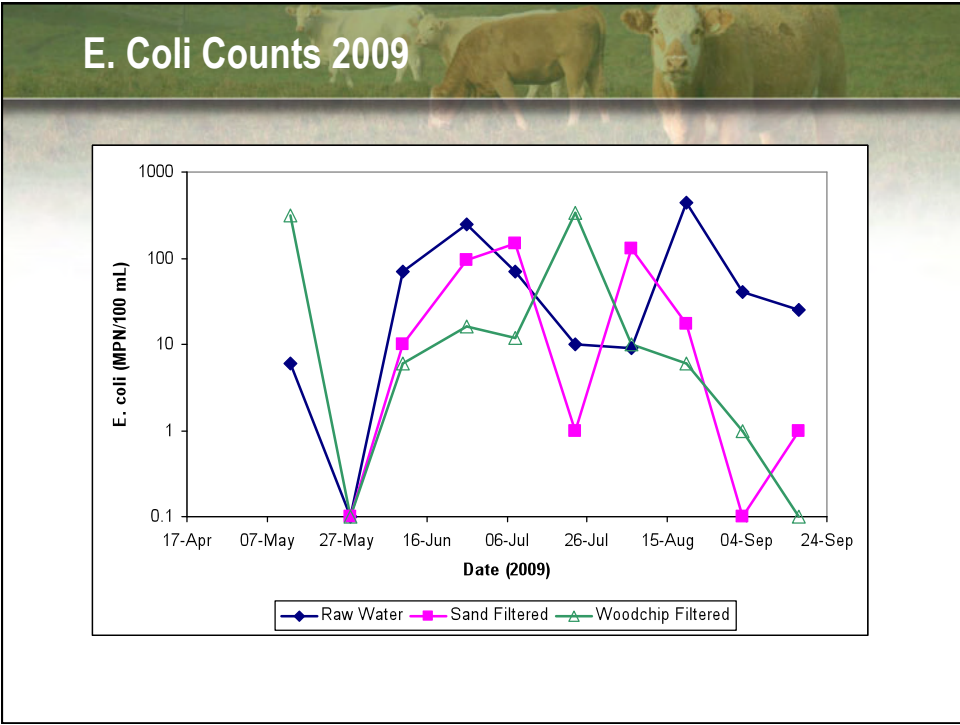


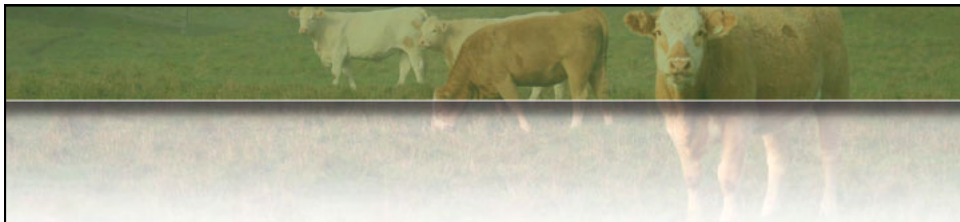
Total Kjeldahl Nitrogen Concentrations 2009



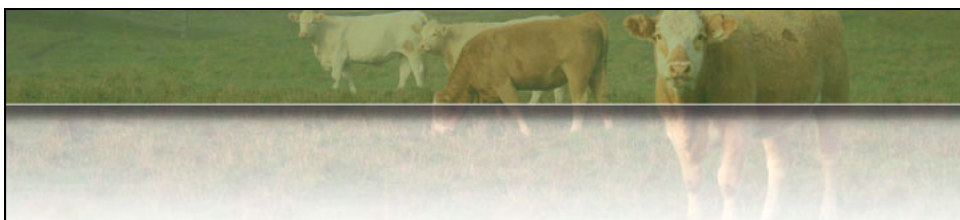
Biochemical Oxygen Demand 2009







- Thank you to our partners!!!
 - WBDC (Dr. Bart Lardner)
 - SK Ministry of Agriculture



For More Information:

Sharon Reedyk: (780) 495-5965
Alan Stewart: (780) 495-5236
Serena McIver: (306) 780-5152